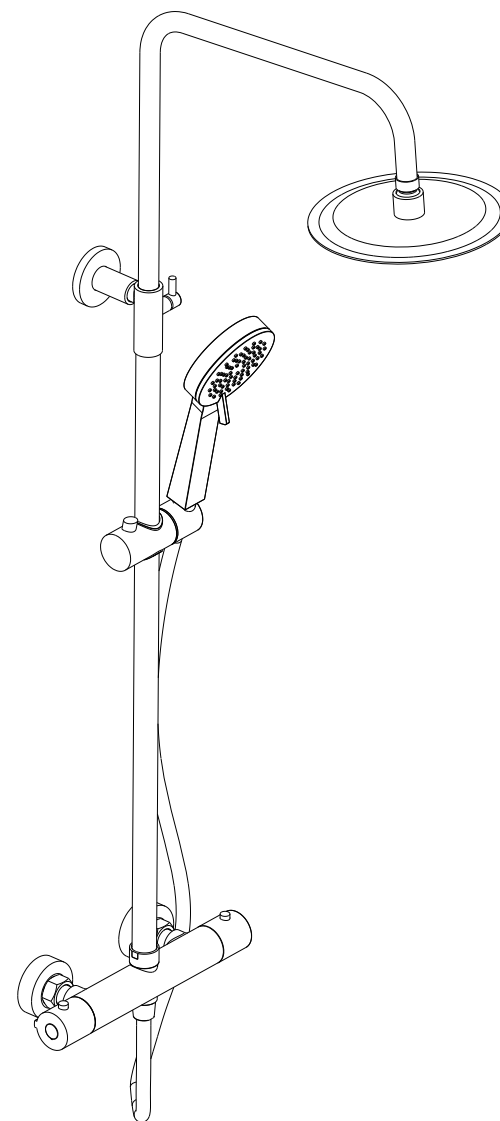
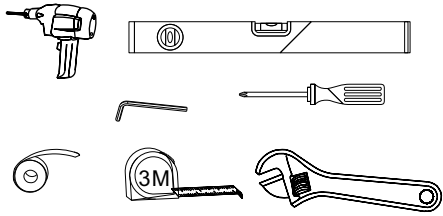


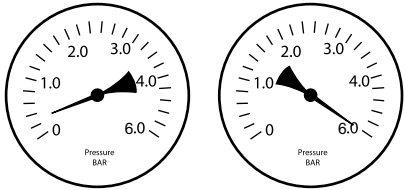
Thermostatic Shower Mixer System Installation





Specifications

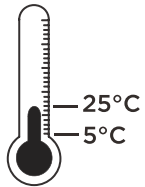
Dynamic Water Pressure
 Min: 0.2 bar Max: 6.0 bar



Maximum Static Pressure: 10.0 bar

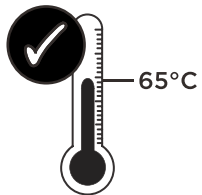
Inlet Water Temperature

Cold Water Supply



Min: 5°C Max: 25°C

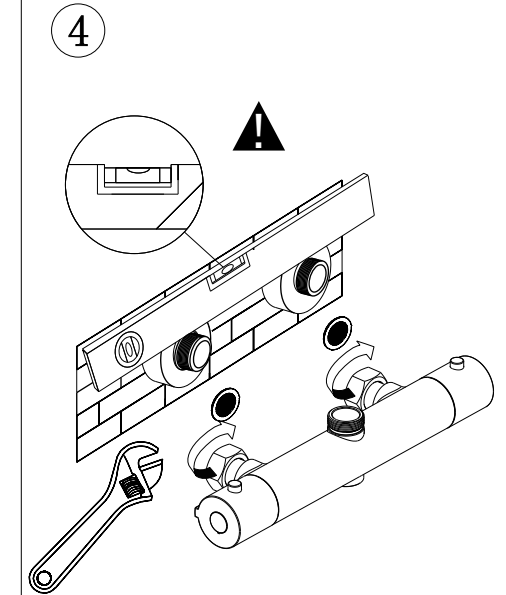
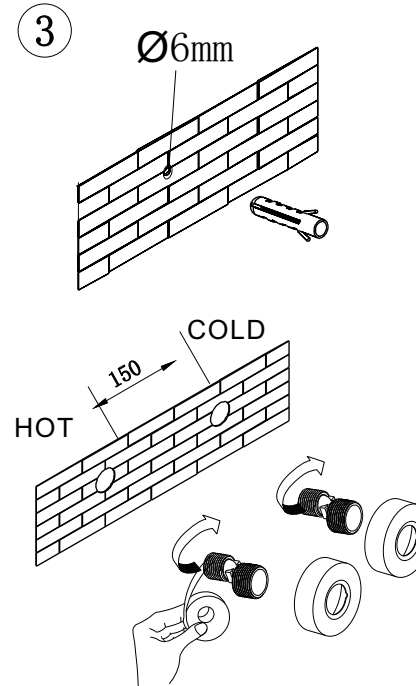
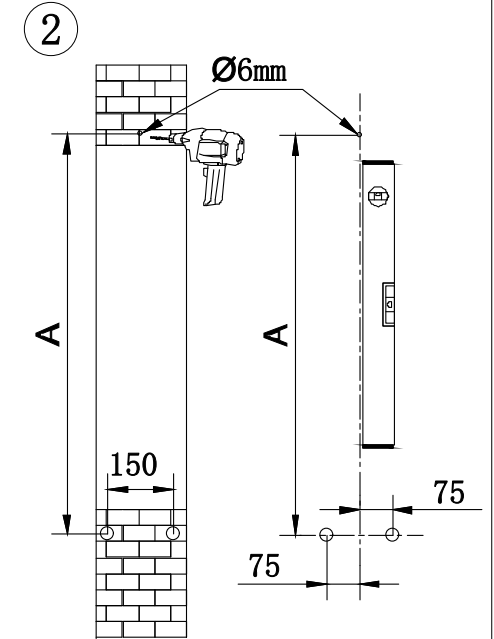
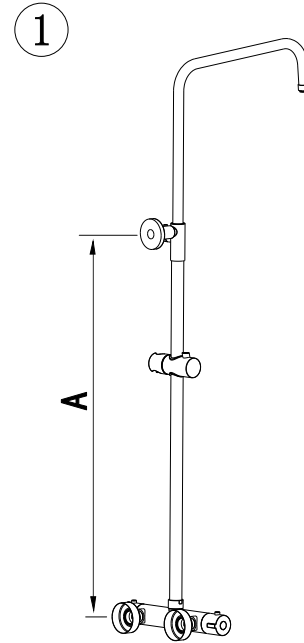
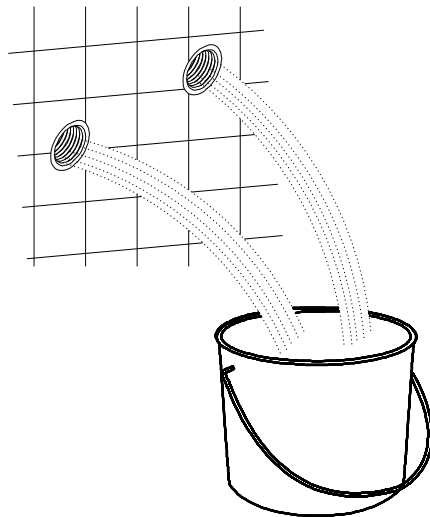
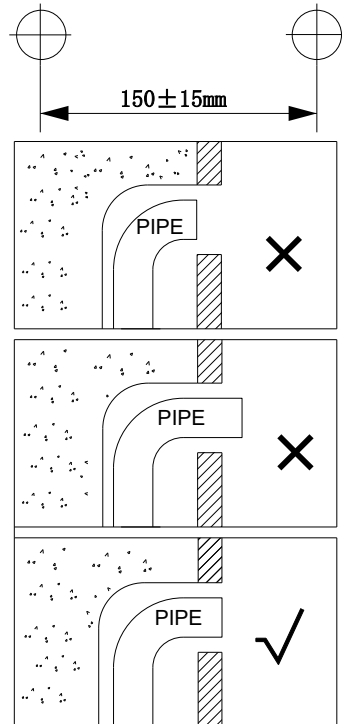
Hot Water Supply



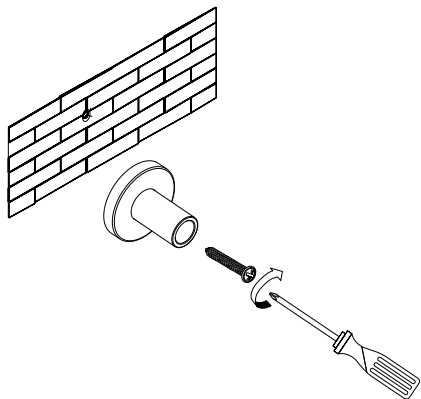
65°C Recommended

! IMPORTANT

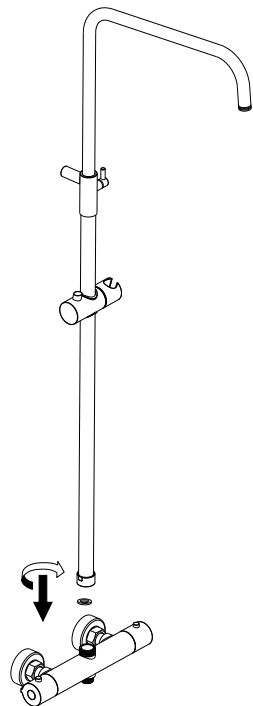
The inlet hot water must be at least 10°C above the required blend temperature.



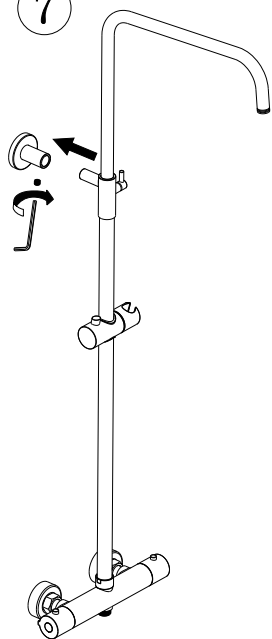
5



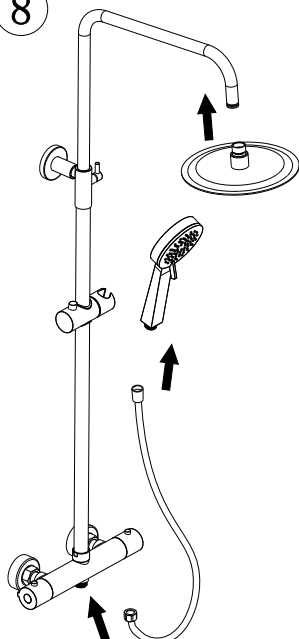
6



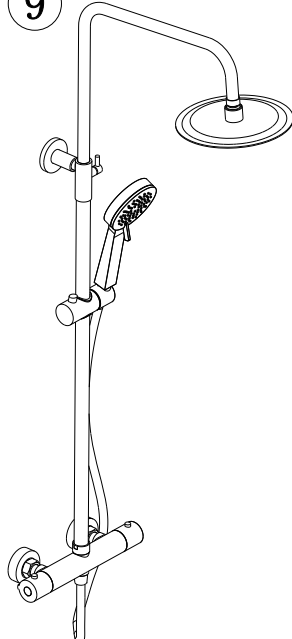
7



8

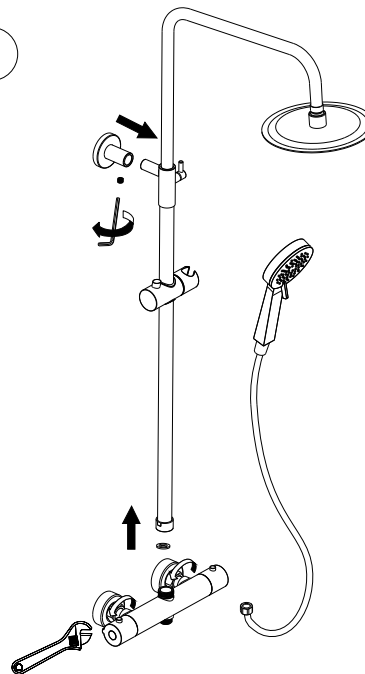


9

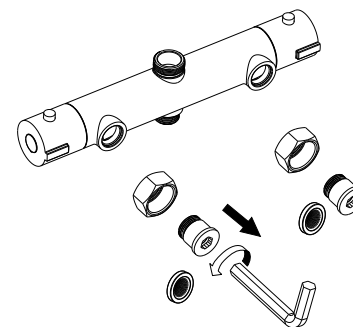


Maintenance-Cleaning check valve & mesh filter

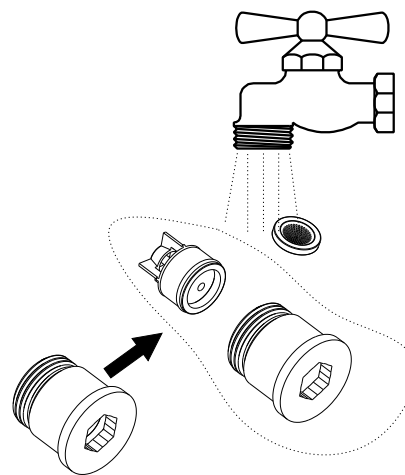
1



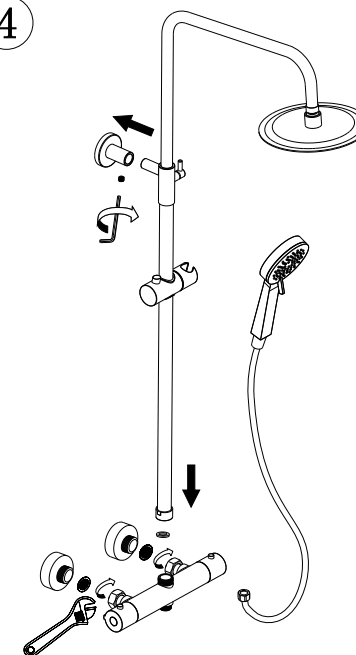
2



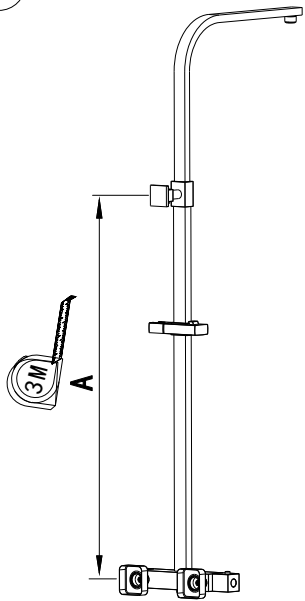
3



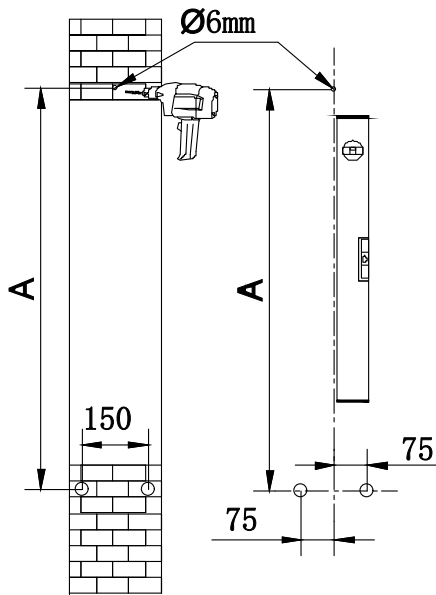
4



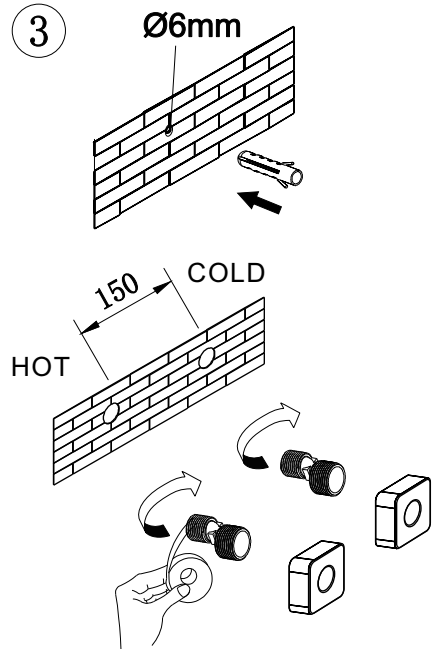
1



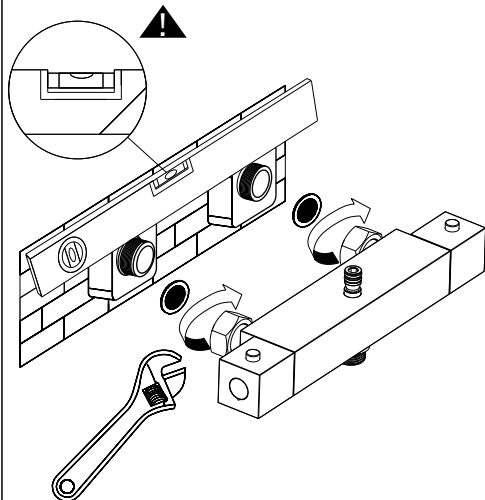
2



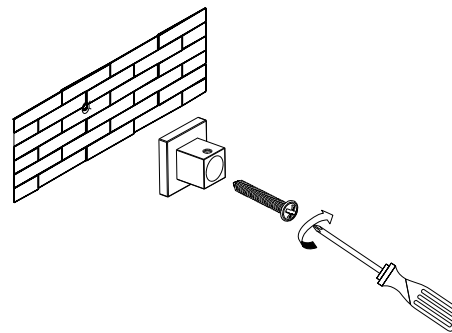
3



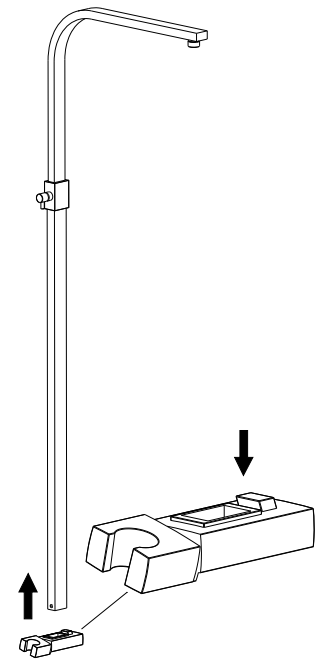
4



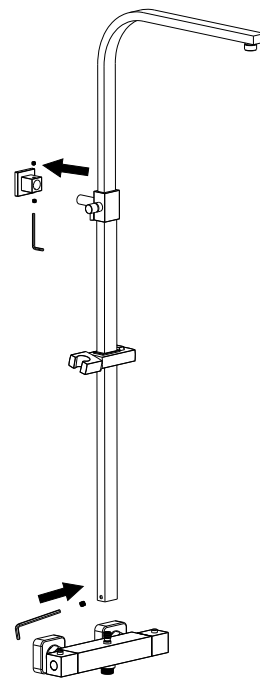
5



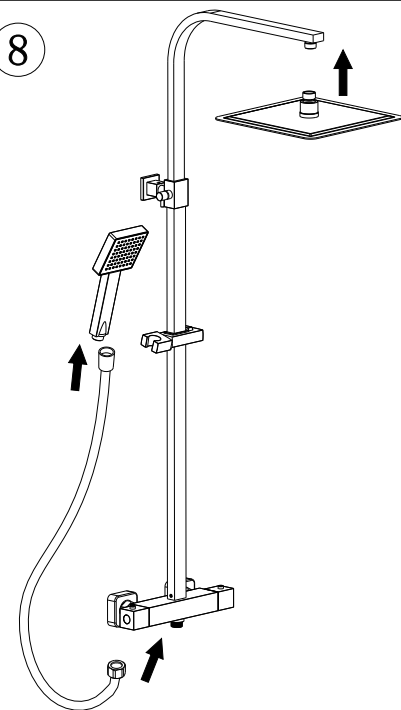
6



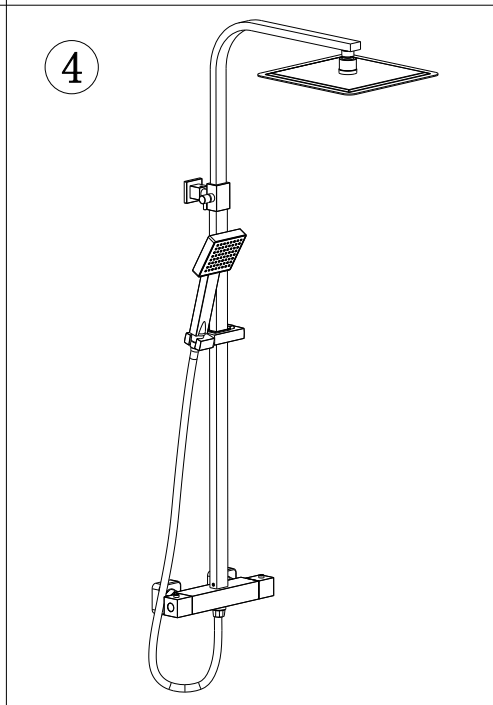
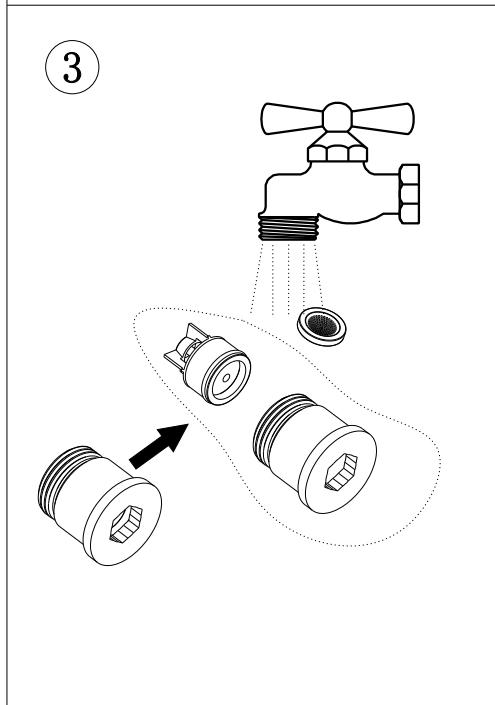
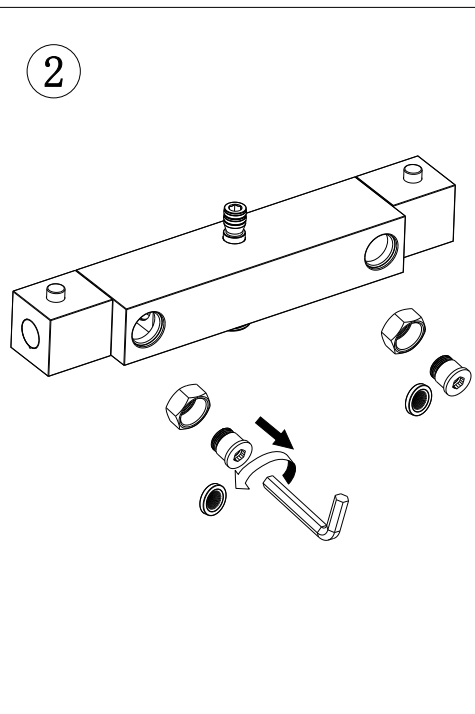
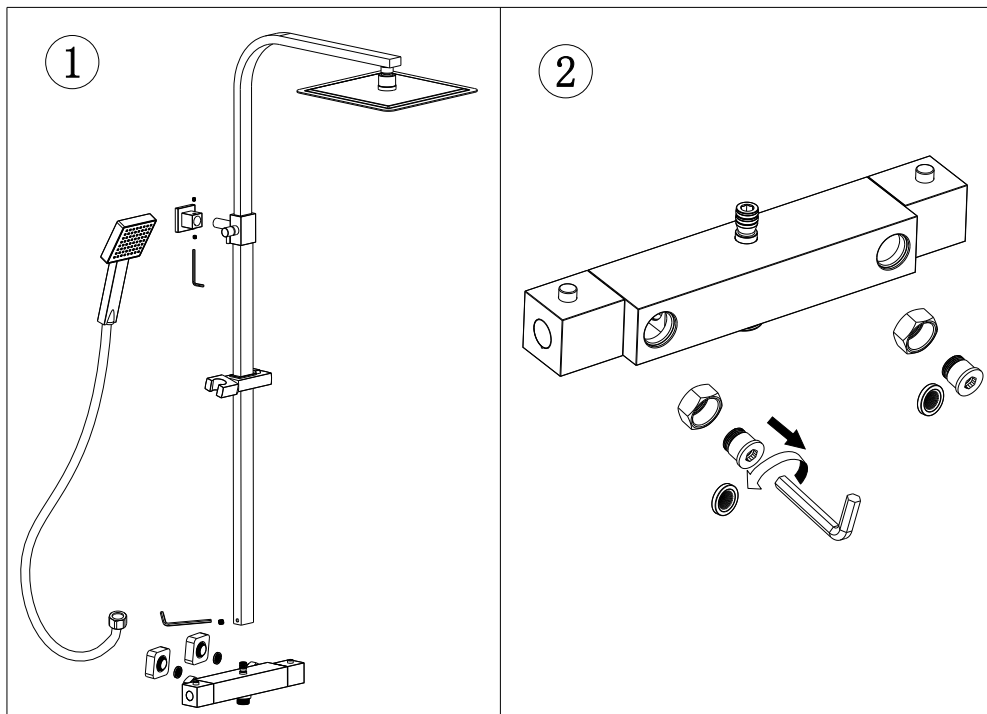
7



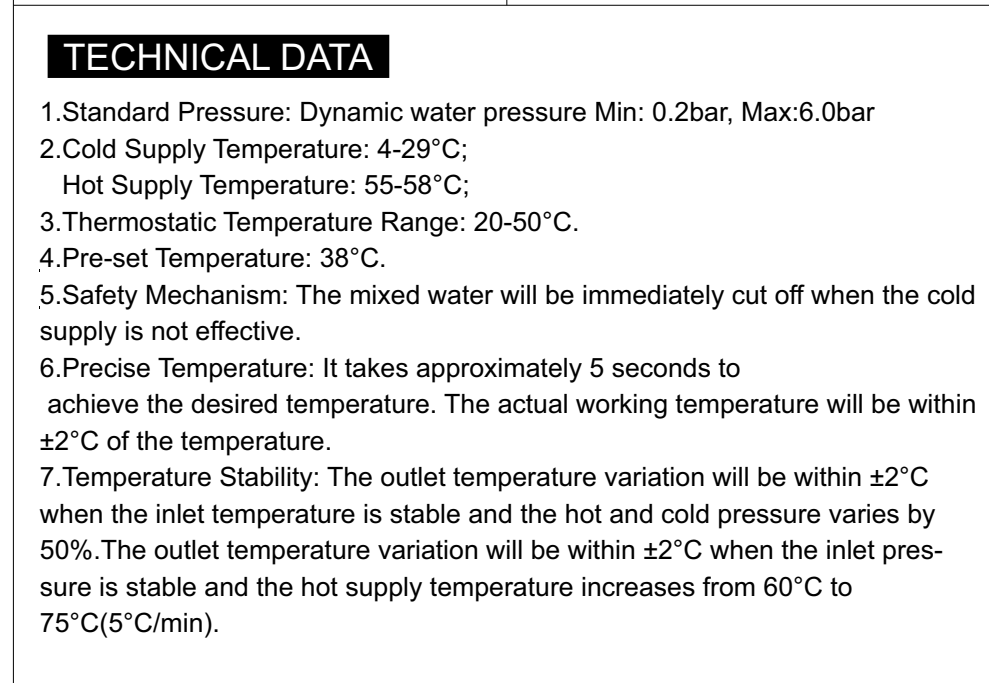
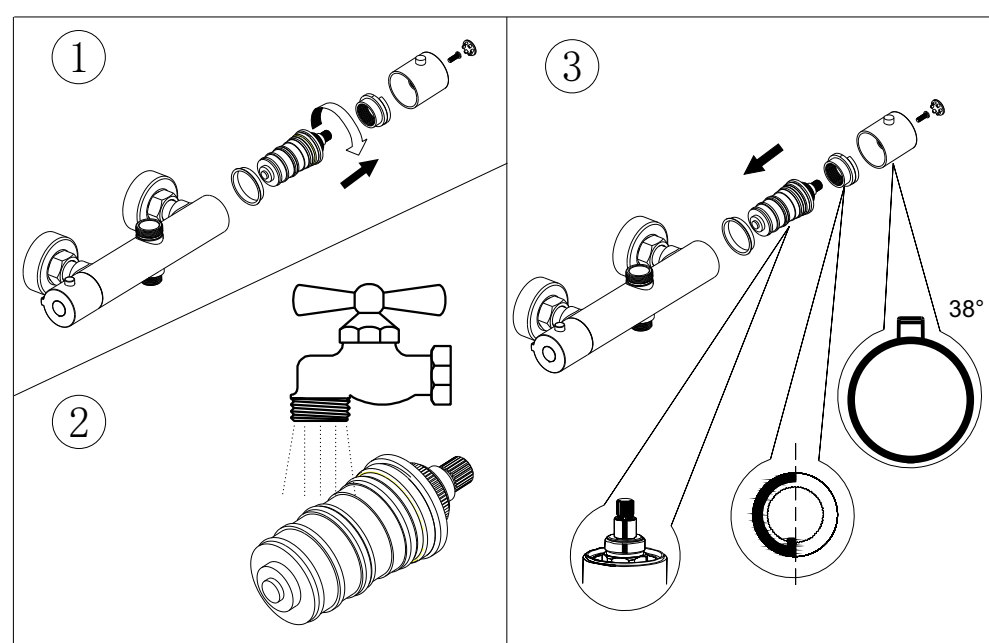
8



Maintenance-Cleaning check valve & mesh filter



Maintenance-Cleaning Thermostatic Cartridge



TECHNICAL DATA

1. Standard Pressure: Dynamic water pressure Min: 0.2bar, Max: 6.0bar
2. Cold Supply Temperature: 4-29°C;
Hot Supply Temperature: 55-58°C;
3. Thermostatic Temperature Range: 20-50°C.
4. Pre-set Temperature: 38°C.
5. Safety Mechanism: The mixed water will be immediately cut off when the cold supply is not effective.
6. Precise Temperature: It takes approximately 5 seconds to achieve the desired temperature. The actual working temperature will be within $\pm 2^{\circ}\text{C}$ of the temperature.
7. Temperature Stability: The outlet temperature variation will be within $\pm 2^{\circ}\text{C}$ when the inlet temperature is stable and the hot and cold pressure varies by 50%. The outlet temperature variation will be within $\pm 2^{\circ}\text{C}$ when the inlet pressure is stable and the hot supply temperature increases from 60°C to 75°C (5°C/min).

Cleaning All surfaces should be cleaned using a clean damp cloth. No abrasive cleaning agents or materials should be used.

Maintenance/ Care and Cleaning Instruction

Maintenance and Cleaning Instructions

The finishes of our products are durable. To keep our products in good condition, the end users are required to regularly maintain and clean all the surfaces based on the following guidelines:

- Warm water or mild soapy water should be used to remove system debris and limescale.
- After cleaning, all soapy water should be removed by water and polished with a clean, soft and dry cloth.
- No abrasive cleaning agents or materials should be used.
- No corrosive cleaning agents should be used, which will cause corrosion.
- More care should be taken in hard-water areas to ensure all the surfaces are regularly cleaned.
- Failure to do so will invalidate the product warranty.

Care Instructions

Please be careful when installing, using, cleaning and maintaining this product. Any defects or damages like peeling problem at this product due to the following reasons is not covered by the product warranty:

- incorrect installation.
- accidental or wilful misuse.
- inappropriate cleaning products.
- inadequate maintenance.
- chemical damage caused by system debris and build-up of limescale (any soapy water left on the surface of the product and not cleaned regular will affect the finish of the product.)
- physical damages like scratches.
- damage caused during repair work.
- water quality i.e. rusting water from the pipework need to be fully flushed out after use or water pressure issues.